

OM-ECO 1801E/1802E

With 1/2 pcs Epson I3200 E1/ I1600 E1/XP600

OMAJIC
One-stop Printing
applications manufacturer



Machine Specification

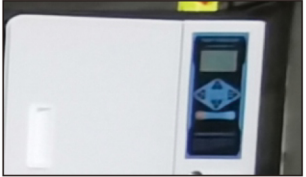
Model No.	OM-ECO1801E/1802E	Max Print Size	70" (180cm)
Max Print Height	1-2mm	Power Consumption	1500W- 1900W
Printer Head	1 Epson I3200-E1/I1600E1/XP600 / 2 Epson I3200-E1/I1600E1/XP600		
Printing Resolution	Standard Dpi: 720×1200dpi		
Printing Speed	<div>1801E: I3200-E1:720*1200dpi,4Pass 20 sqm/h, 720*2400dpi,6 Pass 14 sqm/h I1600-E1:720*1200dpi,4Pass 10sqm/h, 720*2400dpi,6 Pass 7sqm/h</div> <div>1802E: I3200-E1:720*1200dpi,4pass 40sqm/h 720*2400dpi 6pass 30sqm/h I1600-E1:720*1200dpi,4pass 20sqm/h 720*2400dpi 6pass 15sqm/h</div>		
Printing Quality	True Photographic Quality		
Ink Colors	CMYK		
File Format	PDF,JPG, TIFF,EPS,AI,etc		
Software	PhotoPrint/Ripprint		
Working Environment	20-28 Degrees.		
Machine Size&Net Weight	2827*770*1478mm; 150kg		



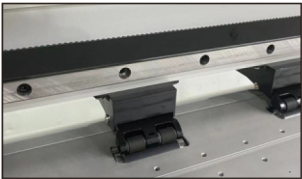
Product details



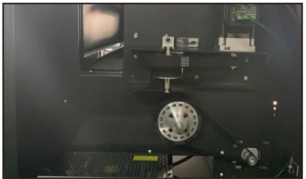
Stable bulk system



Display board



Two-foot pinch rollers



High quality DC servo motor



Exterior heating



Collector